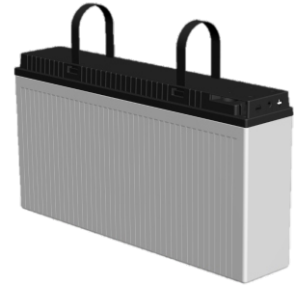


LPF SERIES-Front Terminal

LPF12-150(12V150AH)

Specification

Nominal Voltage	12V	
Nominal Capacity(10HR)	150AH	
Dimension	Length	551±3mm (21.7 inches)
	Width	110±2mm (4.33 inches)
	Container Height	288±3mm (11.3 inches)
	Total Height (with Terminal)	288±3mm (11.3 inches)
Approx Weight	Approx 46.0 Kg (101.4 lbs)	
Terminal	T6	
Container Material	ABS	
Rated Capacity	157.6 AH/7.88A	(20hr, 1.80V/cell, 25°C/77°F)
	150.0 AH/15.0A	(10hr, 1.80V/cell, 25°C/77°F)
	144.0 AH/18.0A	(8hr, 1.80V/cell, 25°C/77°F)
	131.5 AH/26.3A	(5hr, 1.75V/cell, 25°C/77°F)
	96.0 AH/96.0A	(1hr, 1.67V/cell, 25°C/77°F)
Max. Discharge Current	1500A (5s)	
Internal Resistance	Approx 4.3mΩ	
Operating Temp. Range	Discharge : -20~55°C (-4~131°F)	
	Charge : 0~40°C (32~104°F)	
	Storage : -15~50°C (5~122°F)	
Nominal Operating Temp. Range	25±3°C (77±5°F)	
Cycle Use	Initial Charging Current less than 45.0A. Voltage 14.4V~15.0V at 25°C(77°F)Temp. Coefficient -30mV/°C	
	Standby Use No limit on Initial Charging Current Voltage 13.5V~13.8V at 25°C(77°F)Temp. Coefficient -20mV/°C	
Capacity affected by Temperature	40°C (104°F)	103%
	25°C (77°F)	100%
	0°C (32°F)	86%
Self Discharge	Leoch LPF series batteries may be stored for up to 6 months at 25°C(77°F) and then a freshening charge is required. For higher temperatures the time interval will be shorter.	



Applications

- ◆ For standard 19 inches or 23 inches power cabinets
- ◆ Network connection equipment of communication system
- ◆ Power system of special network or local area network
- ◆ UPS, standby power supply
- ◆ Power station systems
- ◆ Railway and marine systems



Constant Current Discharge (Amperes) at 25 °C (77°F)

F.V/Time	15min	30min	1h	2h	3h	4h	5h	8h	10h	20h
1.85V/cell	194.1	125.4	79.0	47.4	35.8	28.5	23.8	16.8	14.1	7.38
1.80V/cell	225.7	141.7	87.5	51.6	38.7	30.7	25.7	18.0	15.0	7.88
1.75V/cell	238.8	148.1	90.7	53.2	39.8	31.5	26.3	18.3	15.2	8.00
1.70V/cell	252.4	154.7	94.0	54.9	40.9	32.3	26.8	18.7	15.5	8.12
1.67V/cell	260.3	158.6	96.0	55.8	41.5	32.7	27.2	18.8	15.6	8.19
1.60V/cell	279.0	167.6	100.7	58.1	43.1	33.8	28.0	19.3	15.9	8.37

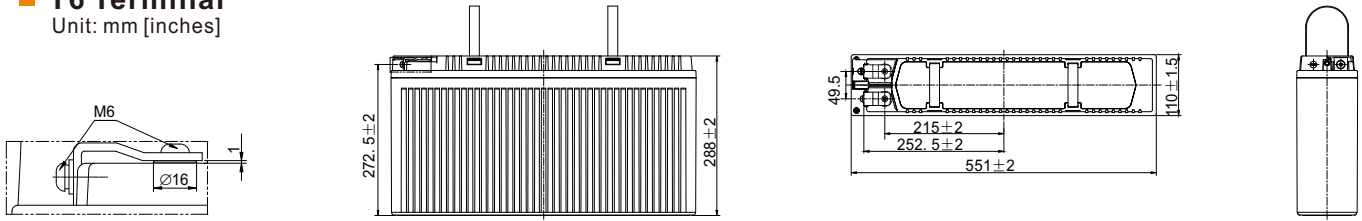
Constant Power Discharge (Watts/cell) at 25 °C (77°F)

F.V/Time	15min	30min	1h	2h	3h	4h	5h	8h	10h	20h
1.85V/cell	372.9	242.3	153.6	92.7	70.2	56.0	46.9	33.2	27.8	15.0
1.80V/cell	429.1	271.7	168.9	100.4	75.6	60.2	50.4	35.5	29.6	15.8
1.75V/cell	449.2	281.5	173.9	102.9	77.3	61.5	51.4	36.1	30.1	16.0
1.70V/cell	469.4	291.3	179.0	105.6	79.2	62.8	52.4	36.6	30.5	16.2
1.67V/cell	485.5	297.0	181.9	107.0	80.1	63.5	52.9	37.0	30.7	16.3
1.60V/cell	506.5	309.8	188.9	110.7	82.6	65.3	54.3	37.7	31.3	16.6

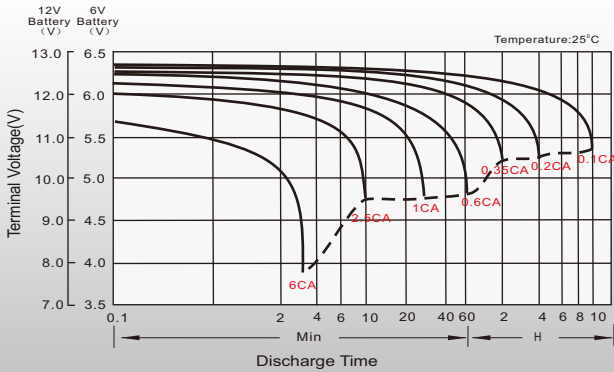
Dimensions

T6 Terminal

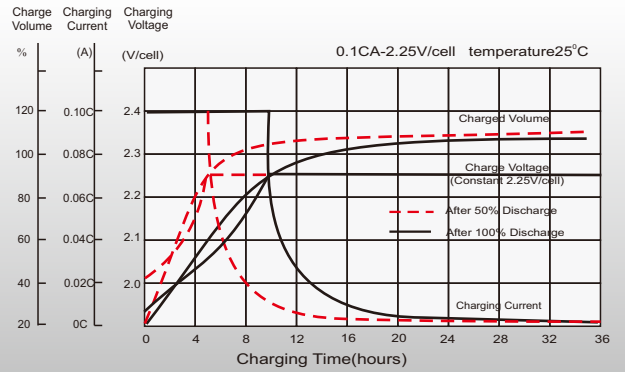
Unit: mm [inches]



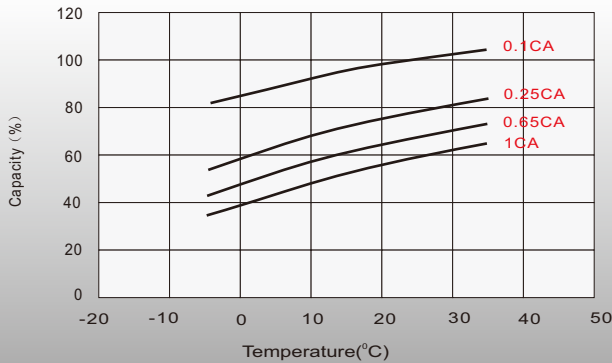
Discharge Characteristics



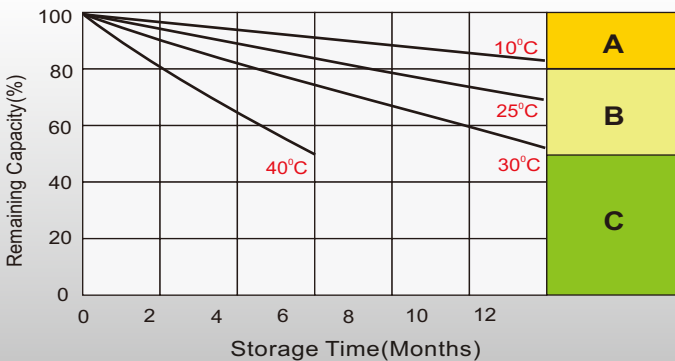
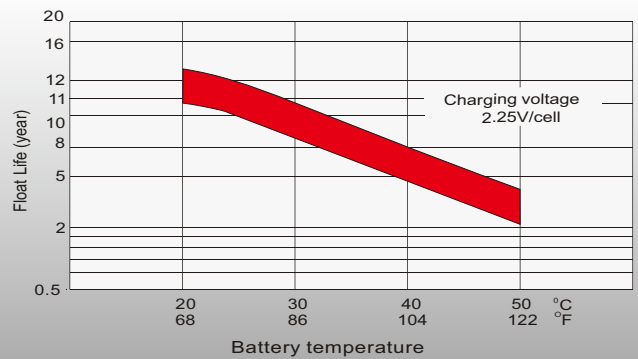
Float Charging Characteristics



Temperature Effects in Relation to Battery Capacity



Effect of Temperature on Long Term Float Life



Self Discharge Characteristics

- A** No supplementary charge required
(Carry out supplementary charge before use if 100% capacity is required.)
- B** Supplementary charge required before use. Optional charging way as below:
 1. Charged for above 3 days at limited current 0.25CA and constant volatge 2.25V/cell.
 2. Charged for above 20hours at limited current 0.25CA and constant volatge 2.45V/cell.
 3. Charged for 8~10hours at limited current 0.05CA .
- C** Supplementary charge may often fail to recover the capacity.
The battery should never be left standing till this is reached.

Sales Office

China sales office:

Add:5th Floor,Xinbaohui Bldg.,Nanhai Blvd.,
Nanshan,Shenzhen, China. 518052
Tel: +86-755-86036060 (100 lines)
Fax: +86-755-26067269
E-mail:export@leoch.com
Http://www.leoch.com

HongKong sales office:

Workshop C, 33/F, TML Tower,
No. 3 Hoi Shing Road, Tsuen Wan,
New Territories, Hong Kong
Tel: +852 35786666
Fax: +852 21170016
E-mail: sales.hk@leoch.com

Singapore sales office:

Add: No. 1 Tech Park Crescent,
Singapore 638131
Tel: +65 68636078
Fax: +65 68636079
Email sales.sg@Leoch.com
Http://www.leoch.com

North America sales office:

Add: 19751 Descartes, Unit A,
Foothill Ranch, CA 92610, USA
Tel: 949-588-5853
Fax: 949-588-5966
E-mail: sales@leoch.us
Http://www.leoch.com

Europe sales office:

Add: 9B Wheatstone Court. Waterwells
Business Park, Gloucester, GL2-2AQ,
UK United Kingdom
Tel: +44(0) 1452 729428 / 1452 729696
Fax: +44 (0)1452-690125
E-mail: Sales.Europe@leoch.com